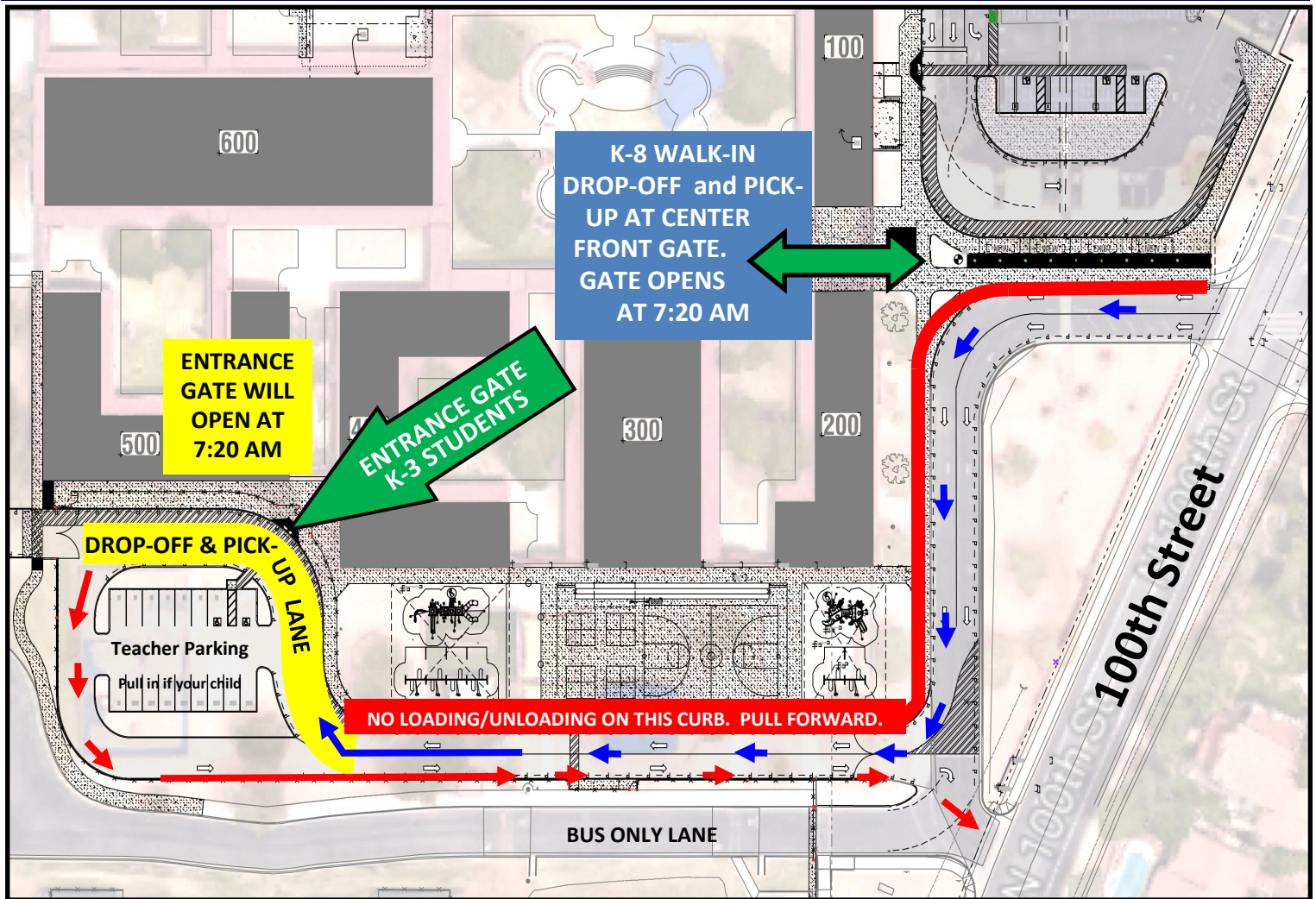


DROP OFF & PICK UP PROCEDURES South Lot Grades K - 3



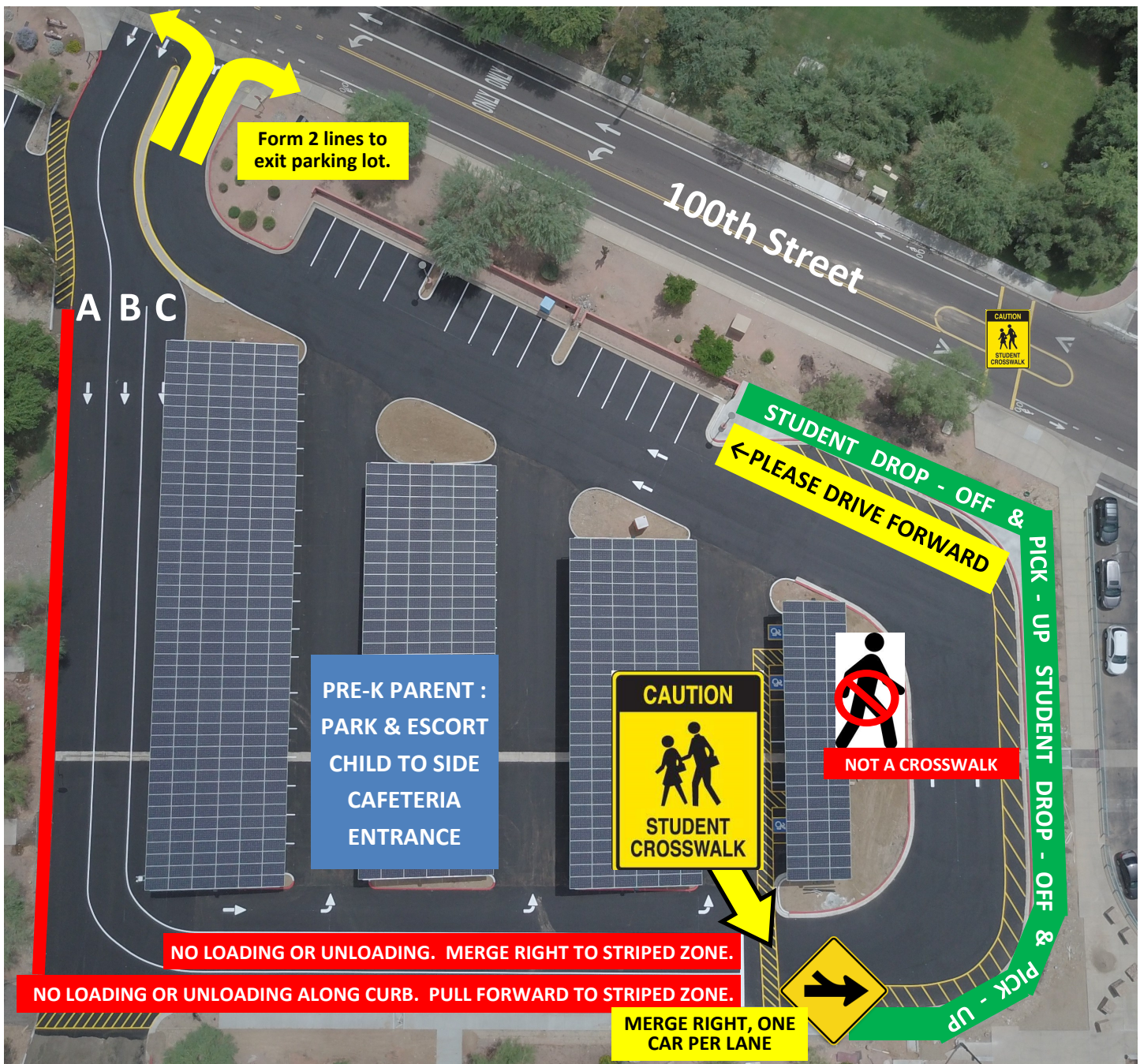
PLEASE PRACTICE STUDENT SAFETY FIRST! YOUR COURTESY AND PATIENCE IS VALUED!

- Enter from 100th Street and proceed along curb, turn right and drive through gate towards the west end of the driveway.
- Drop off lane is highlighted in yellow. Pull forward to the farthest west available spot along the drop off area.
- **DO NOT PUT YOUR CHILD IN DANGER.** DO NOT allow your child to exit or enter from the vehicle's driver side (left). DO NOT allow your child to load or unload items from the trunk or back of your vehicle.
- PARENTS, DO NOT EXIT YOUR VEHICLE. If your child needs assistance, please pull into a parking spot in the parking lot.
- After drop-off, proceed around the Teacher Parking Lot and out through the gate. Be aware of **TWO-WAY TRAFFIC IN AND OUT OF DRIVEWAY** and **PEDESTRIANS CROSSING THE DRIVEWAY.**

Pre-K Entrance: Pre-K parents, please park in the North Lot (next page) and enter through the side exterior cafeteria door to sign your child into Pre-K. Pre-K check-in will begin at 7:45 AM. Pre-K parents arriving after 8:00 AM must enter through the front office and obtain a visitor badge to sign child in at the classroom.

ON THE FIRST DAY OF SCHOOL KINDERGARTEN STUDENTS being escorted by parents will enter through either gate after parking in the North Lot or South Teacher Lot. Parents may escort Kindergarten students directly to their classrooms on the first day of school.

DROP OFF & PICK UP PROCEDURES North Lot Grades 4 - 8



- Lanes A & B are for student drop-off and pick-up. Use Lane C for parking.
- Watch for the crossing guard and students in the in crosswalk.
- Allow one car at a time from each Lane A & B to MERGE RIGHT into the yellow striped Loading Zone. Pull as far forward as possible.
- **DO NOT PUT YOUR CHILD IN DANGER.** DO NOT allow your child to exit or enter from the vehicle's driver side (left). DO NOT allow your child to unload or unload items from the trunk or back of your vehicle.
- PARENTS, DO NOT EXIT YOUR VEHICLE. If your child needs assistance, please pull into a parking spot in the parking lot.